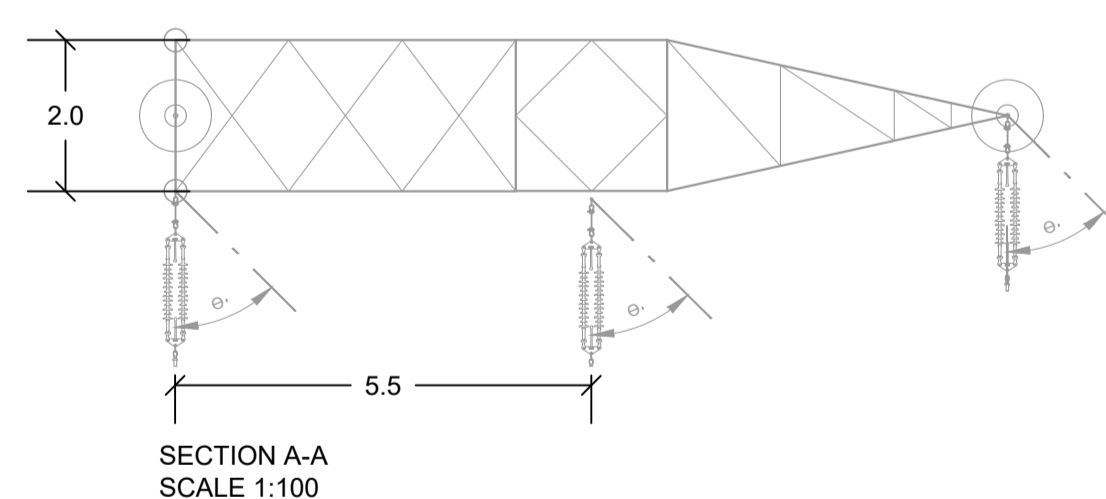
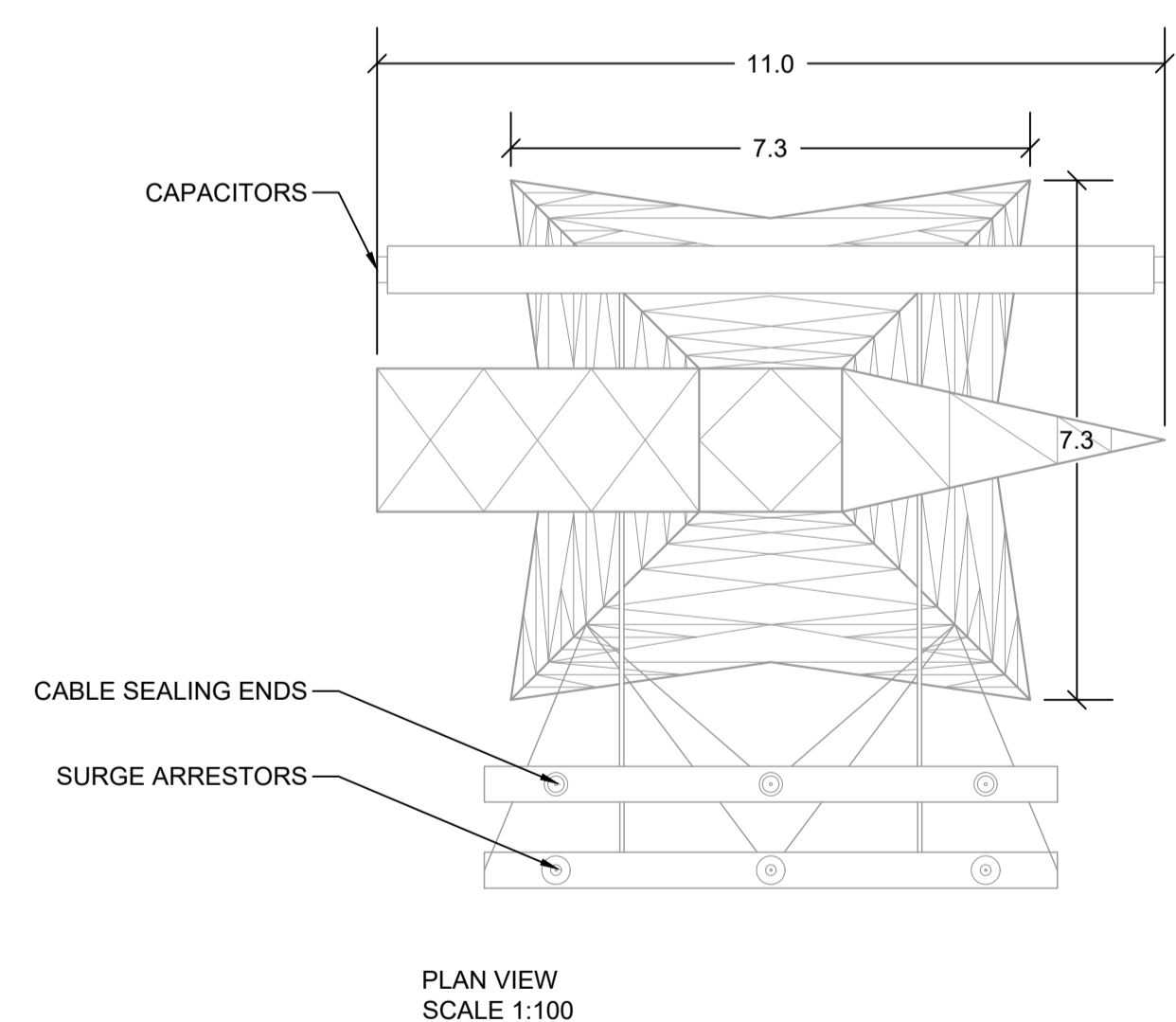
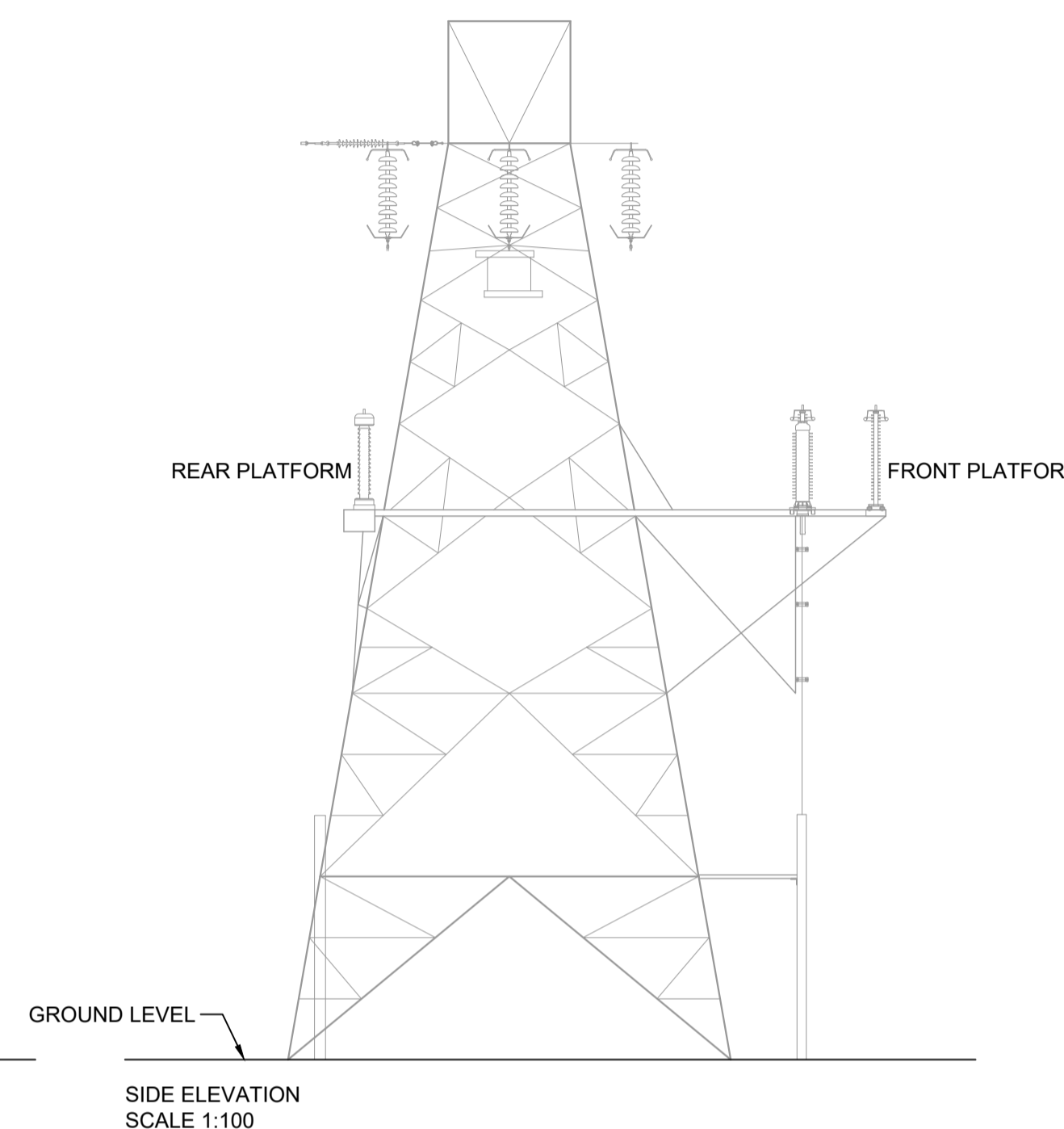
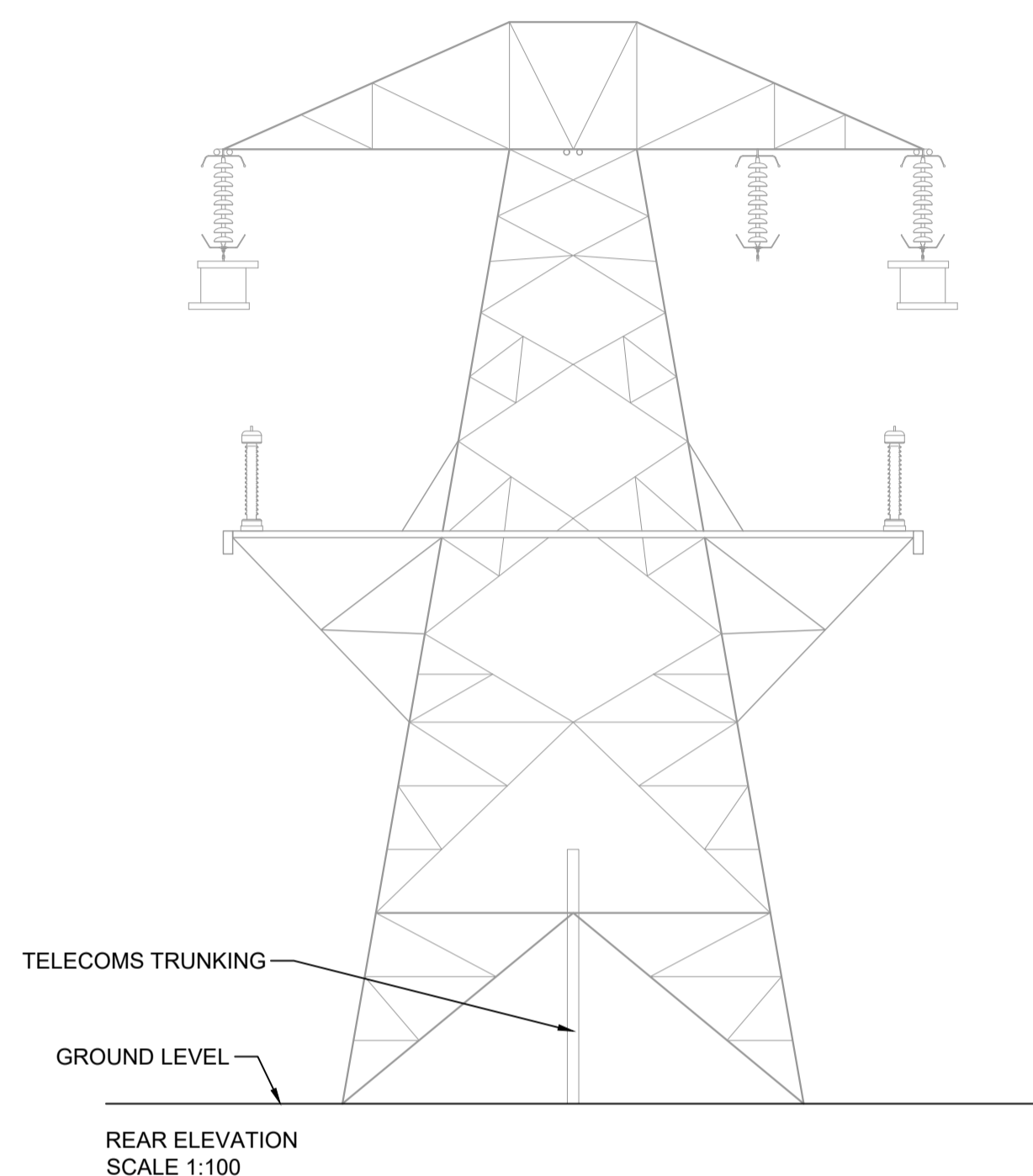
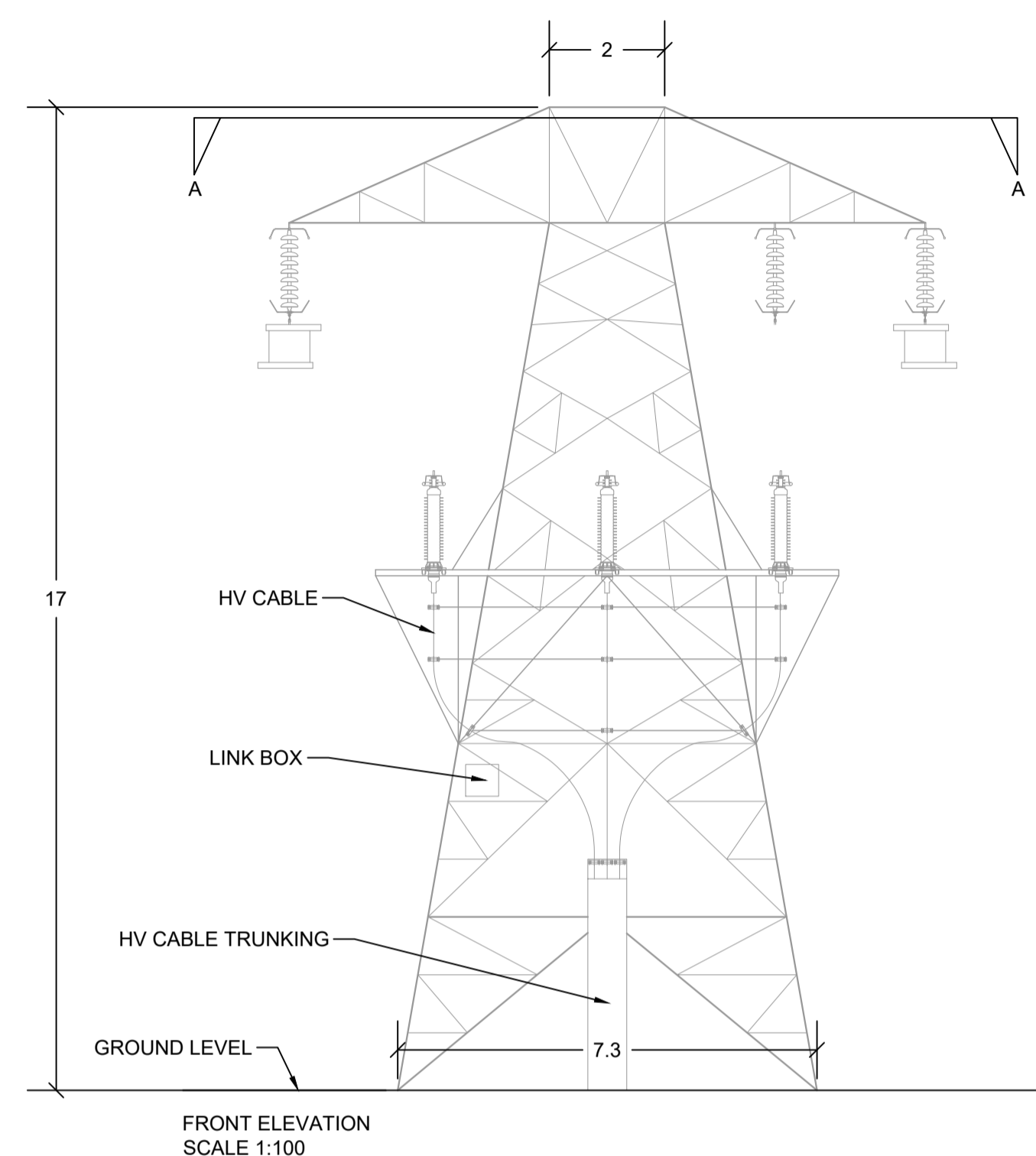


ART DATA CENTRES



P01	FOR PLANNING	PS	RG	03/06/22
Rev	Description	Drawn	Checked	Date

Clifton Scannell Emerson Associates Limited
Consulting Engineers,
3rd Floor, The Highline,
Bakers Point, Pottery Road,
Dun Laoghaire, Co. Dublin,
Ireland, A96 KW29

T. +353 1 288 5006
F. +353 1 283 3466
E. info@csea.ie
W. www.csea.ie

Client **ART DATA CENTRES**
 ART DATA CENTRES ENNIS
 Project **CAMPUS - 110KV GIS SUBSTATION**
 SINGLE CIRCUIT L/C INTERFACE
 Tower DETAILS
 Dwg. Title
 Drawn By **PS** Checked By **RG** Date **JUN 2022**

Project Code	Originator	Zone/ Phase	Level	Type	Role	Dwg. No.
20_110A	CSE	GEN	XX	DR	C	3910

S2	PLANNING	AS INDICATED
Status Code	Suitability Description	Scale @ A1
P01	PLANNING	20_110A
Revision	Project Status	CSEA Job No.